

lift-force 

**MATERIAL
HANDLING
EQUIPMENT**



**Sales & Rentals of Quality Material
Handling Equipment
YOU DRIVE, WE STRIVE**

 Unit 1, DunswartPark, 5 Main Reef Road,
Dunswart, Boksburg 1508.

 +27 (0) 10 599 2412  +27(0) 78 116 1703

 Contact@liftforce.net  www.liftforce.net

**BUILT FOR
ROUGH
TERRAIN**



lift-force  **Rough Terrain
Forklift 1.8-5.0ton**
2WD • Compact 4WD • 4WD

Rough Terrain Forklift Introduction

2WD

Strong flexibility
in rough terrain

100% differential lock.



Compact 4WD

Maximal original
product replenished
Rough Terrain fields



Patented self-designed axle & transmission, compact size meet with European standard.

4WD

Superior performance
in extreme conditions

Traditional technology while imported key components: DANA integrated trans-axle, Sauer Danfoss hydrostatic system, tilting cabin.



Rough Terrain Forklift Introduction

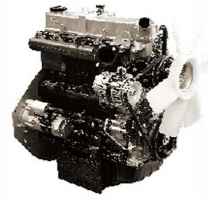
Engine

World renowned brands engine for superior performance.

MITSUBISHI S4S

Rated output 35.3kw/2250rpm >

Rated torque 182N.m/1800rpm >



YANMAR 4TNE98

Rated output 42.1kw/2300rpm >

Rated torque 196.3N.m/1700rpm >



ISUZU 6BG1QC

Rated output 82kw/2000rpm >

Rated torque 416N.m/1400-1600rpm >



MITSUBISHI D04EG

Rated output 36kw/2250rpm >

Rated torque 177N.m/1800rpm >



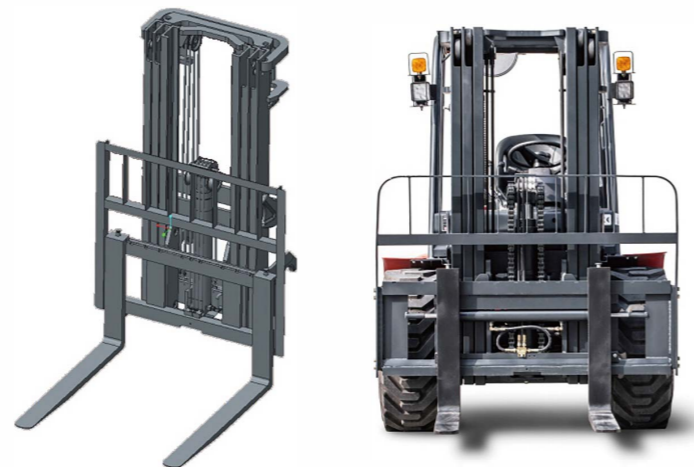
Floating System

A superior full floating overhead guard is installed with rubber damping instead of the traditional rigid design. This greatly reduces machine vibration and offers a smoother ride over rough terrain and reduces operator fatigue.



Wide-view Mast

Wide-view mast provides excellent through-the-mast visibility improving the work efficiency and allowing safe operation of the forklift.



High Quality Tyres

Industrial tyres with a wide footprint giving it greater stability and lift capacity in rough work environments.



High Ground Clearance

Offer greater maneuverability and keep the machine moving in the roughest of applications.



Tilting Overhead Guard (4WD)

Equipped as standard with a tilting overhead guard, to ensure easy access to major components for inspection and service.



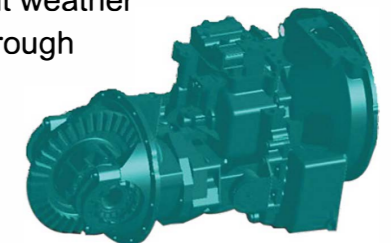
Upward Steering Cylinder (Compact 4WD)

Lay the steering cylinder upward to make the turning radius smaller and rear wheel steering angle bigger.



100% Differential Lock (2WD)

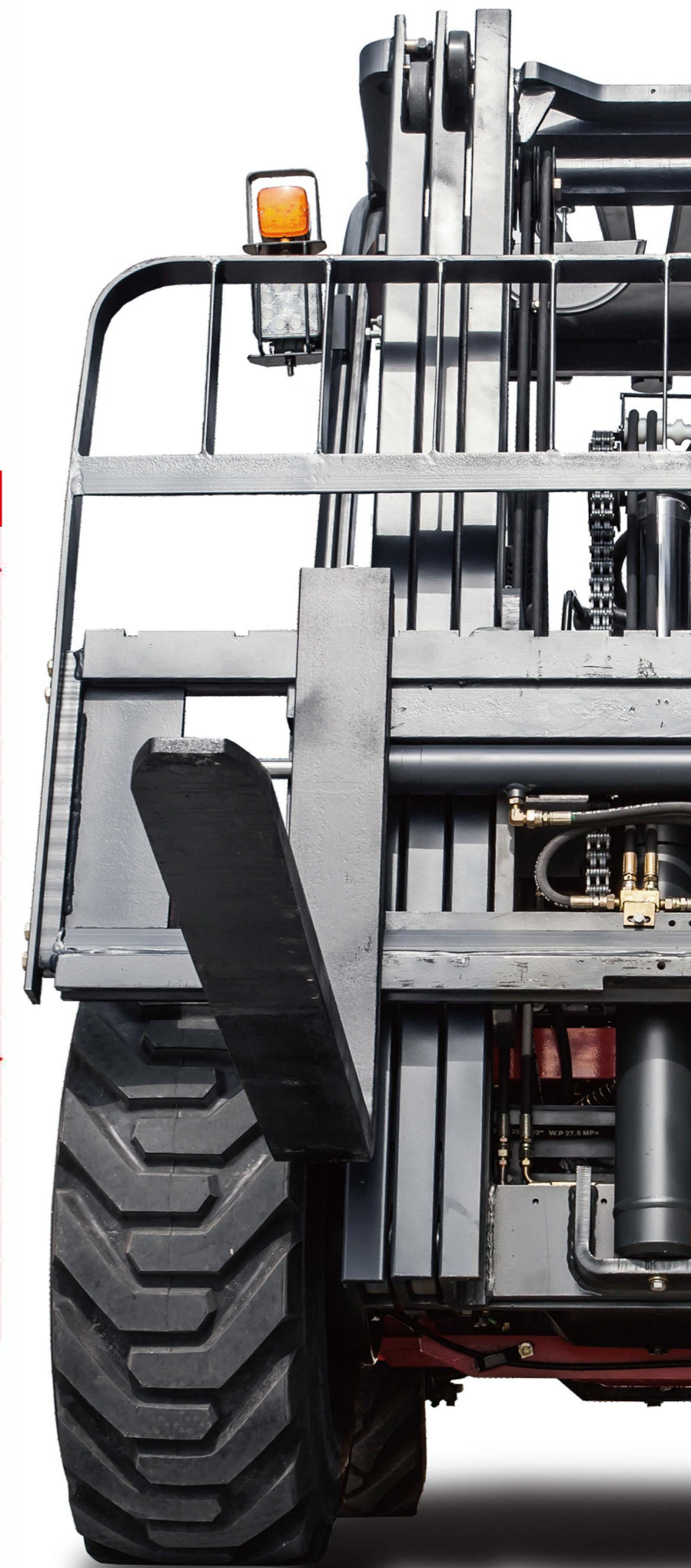
Power shift transmission with jaw type 100% differential lock provides ultimate traction during inclement weather conditions and rough operating surfaces.



Our Solution, Your Decision

	2WD				Compact 4WD			4WD		
YES ● / NO ●	1.8T	2.5T	3.5T	5T	1.8T	2.5T	3.5T	2.5T	3.5T	
Body	Floated Overhead Guard		●			●		●		
	4WD-2WD Rocker Switch		—			●		●		
	Industrial Tyres (F/R)	● / ●	● / ●	● / ●	● / ●	● / ●	● / ●	● / ●	● / ●	
	Suspension Pedal			●		●		●		
	Truck Width (mm)	1450	1557.5	1600	2067	1450	1450	1600	1980	1980
	Loaded into 20GP Container	●	●	●	●	●	●	●	●	●
	External Type Steering Cylinder		●			●		●		
	With Prefilter		●			●		●		
	LED Lights		Standard			Standard		Standard		
	Safety Start System*		Standard			Standard		Standard		
	Suspension Seat		Option			Option		Standard		
	OPS system		Option			Option		Option		
	Performance	Engine	YANMAR 4TNE98/MITSUBISHI S4S		YANMAR 4TNE98	ISUZU 6BG1QC	YANMAR 4TNE98 / MITSUBISHI S4S / MITSUBISHI D04EG			YANMAR 4TNE98
Gradeability		20%	20%	16%	30%	80%/60%	50%	45%	38%	38%
Gradient		11.3°	11.3°	9°	16.7°	38.6°/31°	26.5°	24.2°	20.8°	20.8°
Min. Turning Radius(mm)		2840	2870	2870	3550	3120	3120	3120	4275	4295
Transmission Model		Hydraulic				Hydraulic			Hydrostatic	
Differential Lock Type		Jaw Type Differential Lock				Limited Slip Differential Lock			Limited Slip Differential Lock	
Differential Ratio		100%				45%			45%	

Safety Start System* The truck can't start if any below: 1-operator leaves the seat, 2-seatbelt unfastened, 3-hand brake released, 4-not in N position.



Forklift Specification

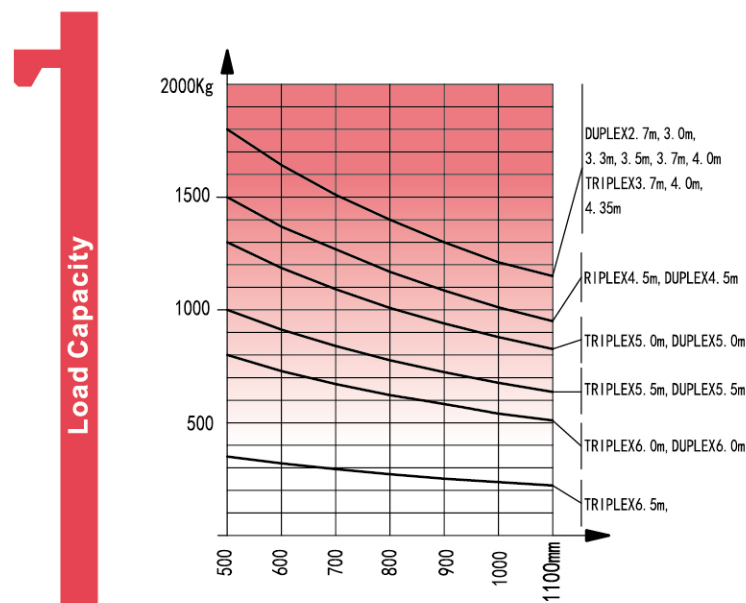


2WD 1.8T/2.5T/3.5T								
General	1	Model	FD18T-C2WE3	FD25T-C2WE3	FD35T-C2WE3			
	2	Power type	Diesel					
		Optional type	WV3					
	3	Rated capacity	Kg	1800	2500	3500		
Characteristic&Dimension	4	Load centre	mm	500	500	500		
	5	Lifting height	mm	3000	3000	3000		
	6	Free lift	mm	105	160	165		
	7	Fork size	L×W×T	mm	1070×100×35	1070×122×40	1070×125×45	
	8	Fork regulating range	Min./Max.	mm	200-1315	250-1160	250-1160	
	9	Mast tilt angle	F/R	Deg	10/12	10/12	10/12	
	10	Front overhang	mm	509	586	601		
	11	Rear overhang	mm	520	520	520		
	12	Min.ground clearance(drive steer axle)	mm	270	270	270		
	Overall dimensions	13	Length to face of fork (without fork)	mm	2910	2946	2956	
		14	Overall width	mm	1440	1557.5	1600.5	
		15	Mast lowered height	mm	2148	2265	2330	
		16	Mast extended height (with backrest)	mm	4150	4175	4305	
		17	Overhead guard height	mm	2256.5	2256.5	2276	
	18	Turning radius	mm	2840	2870	2870		
	Min. right angle stacking aisle width	19	Pallet size a ₁₂ =1000,b ₁₂ =1200	mm	4550	4726	4741	
		19	Pallet size a ₁₂ =1200,b ₁₂ =800	mm	4350	4856	4871	
	Performance	20	Min. right angle stacking aisle width(pallet size a ₁₂ =1200,b ₁₂ =1200)	mm	2560	2870	2870	
		Speed	21	Travel(Laden/Unladen)	Km/h	20/19	20/18	22/22(WE3)/20/18(WV3)
22			Lifting(Laden)	mm/sec	610(WE3)/590(WV3)	570(WE3)/480(WV3)	450(WE3)/385(WV3)	
23			Lowering(Laden)	mm/sec	450	450	450	
24	Max. Drawbar pull(Laden)	KN	15	17(WE3)/15(WV3)	17(WE3)/15(WV3)			
Tyre	25	Max. Gradeability(Laden)	%	20	20	16		
	Tyre	26	Front		12-16.5-12PR	12-16.5-12PR	14-17.5-14PR	
		27	Rear		27×10-12-12PR	27×10-12-12PR	27×10-12-12PR	
	Tread	28	Front	mm	1125	1250.5	1250.5	
29		Rear	mm	1185	1205	1205		
Weight	30	Wheelbase	mm	1880	1880	1880		
	31	Self weight	kg	3700	4465	5180		
	Weight Distribution	Laden	32	Front axle	kg	4730	5990	7725
			33	Rear axle	kg	770	975	955
		Unladen	34	Front axle	kg	1480	1785	2070
			35	Rear axle	kg	2220	2680	3110
36	Battery	V/Ah	12/90					
Power&Transmission	Engine	37	Model	4TNE98-BQFLC	S4S-455			
		38	Manufacture	YANMAR	MITSUBISHI			
		39	Rated output/r.p.m.	Kw	42.1/2300	35.3/2300		
		40	Rated torque/r.p.m.	N.m	186-206/1700	170±8/1700		
		41	No. of cylinder		4	4		
		42	Bore×Stroke	mm	98×110	94×120		
	43	Displacement	L	3.318	3.331			
	44	Fuel tank capacity	L	55	55			
	Transmission	45	Manufacture	China				
		46	Type	YQXD30MKS	YQXD30MKS	YQXD40MKS		
	47	Stage	F/R	1/1				
48	Operating pressure	Mpa	20					

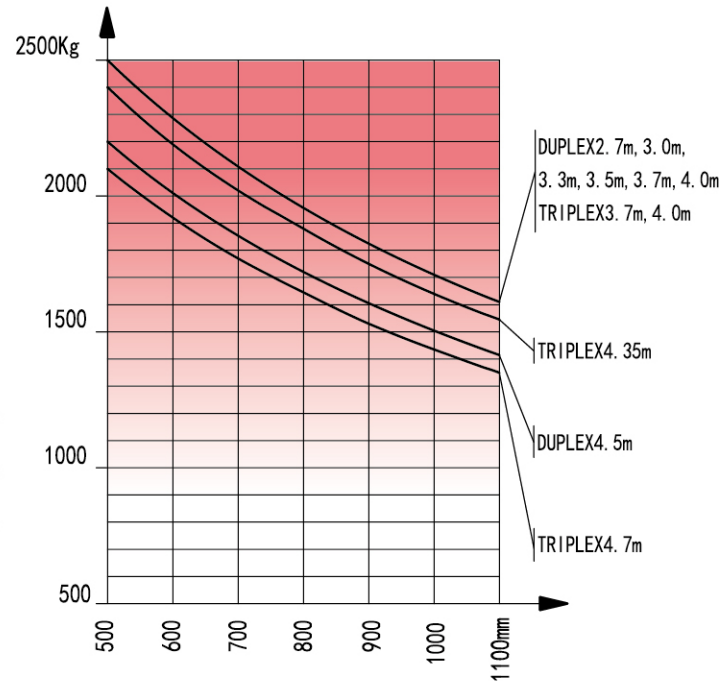
Compact 4WD 1.8T/2.5T/3.5T										
General	1	Model	FD18T-C4WE3	FD25T-C4WE3	FD35T-C4WE3					
	2	Power type	Diesel							
		Optional type	WV3W(6)3							
	3	Rated capacity	kg	1800	2500	3500				
Characteristic&Dimension	4	Load centre	mm	500	500	500				
	5	Free lift height	mm	3000	3000	3000				
	6	Free lift	mm	105	160	165				
	7	Fork size	L×W×T	mm	1070×100×35	1070×122×40	1220×122×45			
	8	Fork regulating range	Min./Max.	mm	200-1315	250-1310	250-1500			
	9	Mast tilt angle	F/R	Deg	10/12	10/12	10/12			
	10	Front overhang	mm	520	586	601				
	11	Rear overhang	mm	600	600	600				
	12	Min.ground clearance(drive steering axle)	mm	219	219	219				
		Min.ground clearance(chassis) (Unladen/Laden)	mm	230/215	230/215	224/230				
		Min.ground clearance(mast) (Unladen/Laden)	mm	275/250	270/255	270/250				
		Ground clearance (drawbar pin)	mm	354.5	354.5	430				
		Height from seat surface to overhead guard inner side	mm	990	990	1043				
	Overall dimensions	13	Length to face of fork(without fork)	mm	3000	3056	3081			
		14	Overall width	mm	1450	1450	1600			
		15	Mast lowered height	mm	2145	2235	2330			
		16	Mast extended height(with backrest)	mm	4140	4175	4305			
		17	Overhead guard height	mm	2256	2256	2276			
	18	Turning radius	mm	3120	3120	3120				
	Min. right angle stacking aisle width	19	Pallet size a ₁₂ =1000,b ₁₂ =1200	mm	4629	4706	4921			
19		Pallet size a ₁₂ =1200,b ₁₂ =800	mm	4829	4906	4871				
20	Min. right angle stacking aisle width(pallet size a ₁₂ =1200,b ₁₂ =1200)	mm	2670	2670	2725					
Performance	Speed	21	Type	WV3W(6)3	WE3	WV3W(6)3	WE3	WV3W(6)3	WE3	
		22	Travel(Unladen/Laden)	km/h	18/17	20/19	18/17	20/19	18/17	19/18
		23	Lifting(Unladen/Laden)	mm	630/590	640/610	620/570	650/600	480/450	510/485
		24	Lowering(Unladen/Laden)	mm	420/450	420/450	510/450	510/450	500/450	500/450
	25	Max. Drawbar pull(Unladen/Laden)	KN	31	38	38	38	27	38	
26	Max. Gradeability(Unladen/Laden)	%	50	80	50	50	30	45		
Tyre	Braking distance	26	Front	12-16.5-12PR			≤6			
		27	Rear	12-16.5-12PR			14-17.5L-14PR			
	Tyre	27	Front	10.0/75-15.3			10.0/75-15.3			
		27	Rear	10.0/75-15.3			10.0/75-15.3			
	Tyre pressure(Front/Rear)		MPa	0.62/0.55			0.55/0.55			
	Tread	28	Front	mm	1123	1123	1250			
29		Rear	mm	1190	1190	1190				
Ground clearance (Front tyre centre)(Unladen/Laden)		mm	405.5/385			405.5/385				
Ground clearance (Rear tyre centre)(Unladen/Laden)		mm	370/350			370/385				
Weight	30	Wheelbase	mm	1880	1880	1880				
	31	Self weight	kg	4255	4830	5545				
	Weight Distribution	Laden	32	Front Axle	kg	4602	6597	7872		
			33	Rear Axle	kg	1453	733	1073		
		Unladen	34	Front Axle	kg	1702	2173	2345		
			35	Rear Axle	kg	2553	2657	3100		
36	Battery	V/Ah	12/90							
Power&Transmission	Engine	37	Model	S4S	D04EG	4TNE98-BQFLC				
		38	Manufacture	MITSUBISHI	MITSUBISHI	YANMAR				
		39	Rated output/r.p.m.	Kw	35.3/2250	36/2250	42.1/2300			
		40	Rated torque/r.p.m.	N.m	182/1800	177/1800	186-206/1700			
		41	No. of cylinder		4	4	4			
		42	Bore×Stroke	mm	94×120	94×120	98×110			
	43	Displacement	L	3.31	3.331	3.318				
	44	Fuel tank capacity	L	55	55	55				
	Transmission	45	Manufacture	China						
		46	Type	FSDT35I						
	47	Stage	F/R	2/1						
48	Operating pressure	MPa	16.5	20	20					

Mast Specification

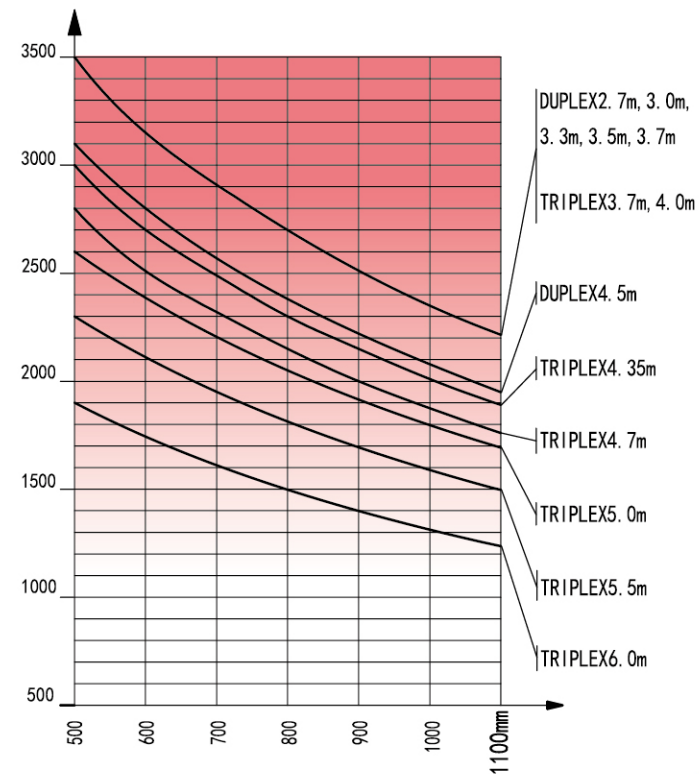
Type	Model	Max. fork height mm	Overall height			Free lift						Front Overhang			Tilt range		Capacity at max. height Loand Center 500mm					
			Lowered			With backrest			Without backrest			1.8T	2.5T	3.5T	FWD	BWD	Without side shift carriage			With side shift carriage		
			1.8T	2.5T	3.5T	1.8T	2.5T	3.5T	1.8T	2.5T	3.5T	1.8T	2.5T	3.5T	Deg	Deg	1.8T	2.5T	3.5T	1.8T	2.5T	3.5T
			mm	mm	mm	mm	mm	mm	mm	mm	mm	mm	mm	mm	mm	mm	kg	kg	kg	kg	kg	kg
wide view 2-stage mast	M330	3300	2298	2385	2480	105	160	165	105	160	165	509	585	600	10°	12°	1800	2500	3500	1800	2500	3200
	M350	3500	2398	2485	2580	105	160	165	105	160	165	509	585	600	10°	12°	1800	2500	3500	1800	2500	3200
	M370	3700	2498	2585	2680	105	160	165	105	160	165	509	585	600	10°	12°	1800	2500	3500	1800	2500	3200
	M400	4000	2698	2785	2880	105	160	165	105	160	165	509	585	600	10°	12°	1800	2500	3400	1800	2500	3100
	M450	4500	2948	3035	3130	105	160	165	105	160	165	509	585	600	10°	12°	1500	2200	3100	1400	2100	2900
	M500	5000	3198	—	—	105	—	—	105	—	—	509	—	—	6°	6°	1300	—	—	1200	—	—
	M550	5500	3498	—	—	105	—	—	105	—	—	509	—	—	6°	6°	1000	—	—	900	—	—
M600	6000	3748	—	—	105	—	—	105	—	—	509	—	—	6°	6°	800	—	—	400	—	—	
Full free 3-stage mast	TFM400	4000	2033	2080	2205	850	888	890	1230	1333	1336	509	590	620	10°	12°	1800	2500	3400	1800	2400	3100
	TFM435	4350	2158	2205	2330	980	1013	1015	1360	1458	1461	509	590	620	10°	12°	1800	2400	3000	1600	2200	2900
	TFM450	4500	2208	—	—	1030	—	—	1410	—	—	509	—	—	10°	12°	1500	—	—	1400	—	—
	TFM470	4700	—	2320	2445	—	1128	1130	—	1573	1576	—	590	620	—	—	—	2100	2800	—	1900	2500
	TFM500	5000	2408	2455	2580	1230	1263	1265	1610	1708	1710	509	590	620	6°	6°	1300	1900	2600	1200	1600	2300
	TFM550	5500	2573	2620	2745	1390	1428	1430	1770	1873	1875	509	590	620	6°	6°	1000	1500	2300	900	1200	2100
	TFM600	6000	2758	2805	2930	1580	1613	1615	1960	2058	2060	509	590	620	6°	6°	800	1200	1900	400	800	1600
TFM650	6500	2973	3020	3145	1790	1828	1830	2180	2273	2275	509	590	620	6°	6°	350	700	1300	200	400	1100	



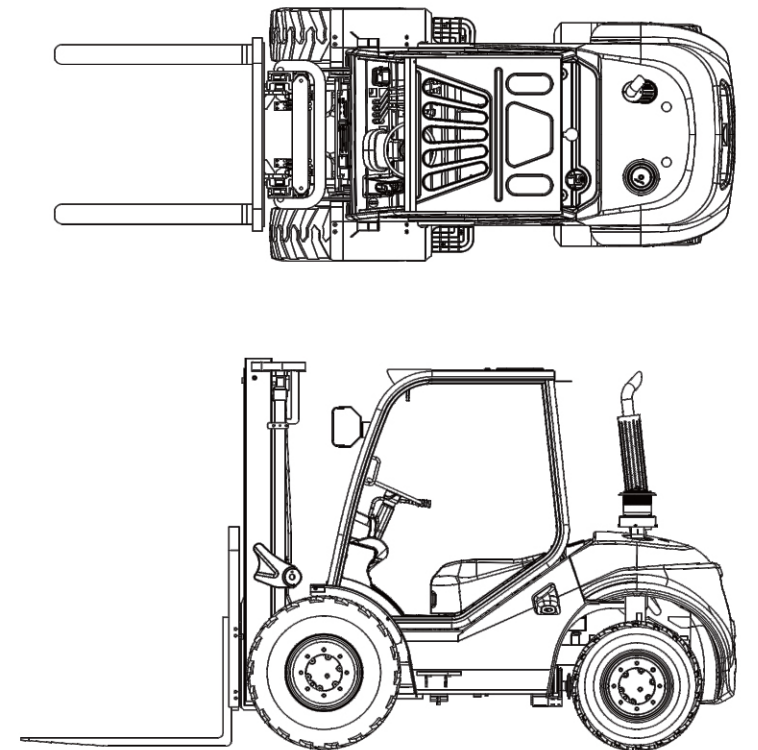
1.8T Load Chart



2.5T Load Chart



3.5T Load Chart



2WD 5T						
General	1	Model		FD50T-C2W (3) 3	FD50T-C2WF3	
	2	Power type		Diesel	Diesel	
	3	Rated capacity		Kg	5000	
	4	Load centre		mm	600	
Characteristic&Dimension	5	Lift height		mm	3000	
	6	Free lift height		mm	145	
	7	Fork size	L×W×T	mm	1220*150*55	
	8	Fork regulating range	Min./Max.	mm	300/1654	
	9	Mast tilt angle	F/R	Deg	15° /15°	
	10	Front overhang		mm	732	
	11	Rear overhang		mm	764	
	12	Ground clearance	Bottom of mast	mm	320	
	13	Overall dimensions	Length to face of fork (without fork)		mm	3622
	14		Overall width		mm	2067
	15		Mast lowered height		mm	2565
	16		Mast extended height (with backrest)		mm	4170
	17	Overhead guard height		mm	2545	
	18	Min. turning radius		mm	3550	
19	Min. right angle aisle width		mm	5700		
Performance	20	Speed	Travel(Unladen)	Km/h	20/19	
	21		Lifting(Laden)	mm/s	380	
	22		Lowering(Laden)	mm/s	370	
	23	Max. Drawbar pull(Laden)		KN	50	
24	Max. Gradeability(Laden)		%	20		
Tyre	25	Tyre	Front		445-65-22.5PR	
	26		Rear		12.5/80-18	
	26	Tread	Front	mm	1620	
	27		Rear	mm	1720	
27	Wheelbase		mm	2125		
Weight	28	Self weight		kg	8450	
	29	Axle distribution	Laden	Front axle	kg	11700
	30			Rear axle	kg	1750
	31		Unladen	Front axle	kg	3550
	32			Rear axle	kg	4900
Power&Transmission	33	Model		TCD 3.6 L4	6BG1QC	
	34	Manufacture		DEUTZ	ISUZU	
	35	Rated output/r.p.m.		Kw	55.4/2200-2300	
	36	Rated torque/r.p.m.		N.m	390/1300	
	37	No. of cylinder			4	
	38	Bore×Stroke		mm	98×120	
	39	Displacement		L	3.6	
	40	Battery	Voltage/Capacity		V/Ah	2*12/80
41	Operating pressure		Mpa	20		

Type	Model	Max. fork height	Overall height Lowered	Free lift		Front Overhang	Tilt range		Capacity		
				With backrest	Without backrest		5.0T	FWD	BWD	capacity at max. height	
										mm	mm
wide view 2-stage mast	M330	3300	2715	145	145	732	15	15	5000	4700	
	M350	3500	2815	145	145	732	15	15	5000	4700	
	M370	3700	2915	145	145	732	15	15	5000	4700	
	M400	4000	3115	145	145	732	15	15	5000	4700	
	M450	4500	3365	145	145	732	15	15	4500	4050	
Full free 3-stage mast	M500	5000	3615	145	145	732	15	15	4000	3600	
	TFM400	4000	2560	1000	1350	765	15	15	5000	4500	
	TFM435	4350	2685	1125	1475	765	15	15	4500	4050	
	TFM450	4500	2736	1176	1526	765	15	15	4000	3600	
	TFM470	4700	2802	1242	1592	765	15	15	3700	3350	
	TFM500	5000	2935	1375	1725	765	10	15	3300	2950	
TFM600	6000	3300	1740	2090	765	10	15	2000	1800		

