



MATERIAL HANDLING EQUIPMENT



Sales & Rentals of Quality Material
Handling Equipment
YOU DRIVE, WE STRIVE

Unit 1. DunswartPark, 5 Main Reef Road.
Dunswart. Boksburg 1508.

+27 (0) 10 599 2412 +27(0) 78 116 1703

Contact@liftforce.net www.liftforce.net

REACH STACKER FOR HANDLING
CONTAINER CRS4532 **45TON**



PERFORMANCE ADVANTAGES

Scientific operation.

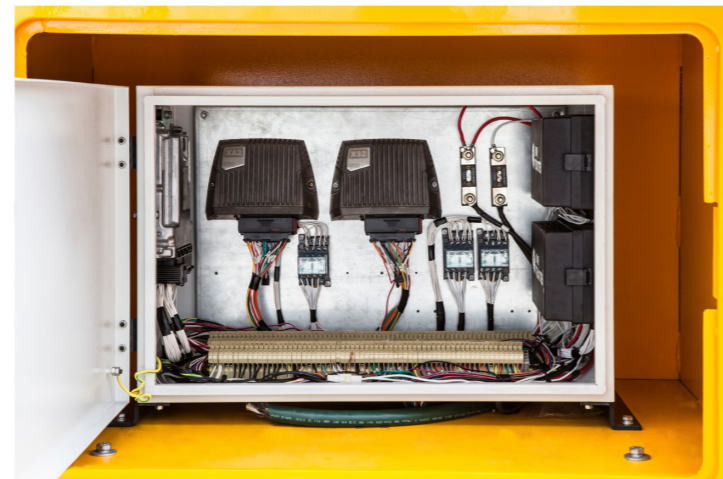
Adopt Parker electric control system, with artificial intelligence display, fault diagnose system and easily maintenance.

High efficiency and reliable.

CAN BUS system, with immediate response and large data information. Also this CAN-BUS system delivers full diagnosis capacities, simplifying the servicing of the truck with anti-interference.

High safety.

Equipped with Rear camera surveillance system and high-capacity fire extinguisher, much more safe and high efficiency.



Stable and easy maintenance.

Adopt complete Parker hydraulic system, international standard hydraulic parts, impact resistant, low noise, stable performance and easy maintenance.

Comfortable driving.

Equipped with tilting cab and hood, to ensure access to major components for inspection and service. Also this makes the wide and clear view with little noisy inside.

SAFETY DEVICE

1

Anti-rollover protection device.

Datas from boom sensors will transfer through CAN bus system for confirming whether in safety work condition. It will buzz in dangerous situation and warning to operator stop running. Boom will only shrink and can't extend.

2

Engine starting protection device.

When engine start, IQAN system will receive datas from engine controller and cut signal to start motor to prevent start again.

3

Travelling protection device

Travelling protection: Close high speed gear to make high speed failure temporary, when twist locks full closed, in order to travelling with load in safety low speed.

4

Twistlock activation protection /Spreader protection.

Hydraulically activated and mechanical interlocking against faulty locking and unlocking.

Twistlocks perform interlock only when all twist locks screwing the container corner fitting and activate landed pin.

Boom only can shrink instead of extend when twist lock not full open nor full closed.

5

Spreader anti-swing device.

The anti-swing oil cylinder will activate when spreader swings and making damping through cross overflow valve to stop spreader swinging and make spreader stable even in harsh condition.

6

Hydraulic lock device.

There is hydraulic lock on the bottom of pitch cylinder to close oil way and stop boom action to ensure safety work, when high-pressure rubber hose is suddenly cracked.



MAIN COMPONENTS



Spreader

Sweden Spreader ELME817
Rotation angle: +105/-195°
Sidesway: ±800mm
Extension: 20'~40'
Max. Load: ≥45000KG

Maximal spreader Max918
Rotation angle: +105/-195
Sidesway: ±800mm
Extension: 20'~40'
Max. Load: ≥45000KG

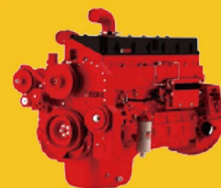
Engine



Model: VOLVO TAD1171VE
Rated output: 265kw/2100r/min
No. Of cylinder: 6-inline
Rated torque: 1785Nm/1260rpm
Emission standard: Euro IV/Tire4
Fuel consumption rate: 210g/kw-h



Model: VOLVO TAD1151VE
Rated output: 265kw/2100r/min
No. Of cylinder: 6-inline
Rated torque: 1785Nm/2100rpm
Emission standard: Euro III
Fuel consumption rate: 210g/kw-h



Model: CUMMINS QSM11-335
Rated output: 250kw/2100r/min
No. Of cylinder: 6-inline
Rated torque: 1708Nm/1400rpm
Emission standard: Euro III
Fuel consumption rate: 210g/kw-h

Transmission



DANA 14.7HR36432 transmission
Hydraulic torque converter + Gear box
Gear shifting front/rear: 4/4
Forward & reverse gear: AMT, CVT

Axle

German KESSLER drive Axle D102 PL341, equipped with several sealed, wet disc brakes and central pliers disc brake, which is maintenance free.



REACH STACKER WORKING SPOT MAP



Guangxi Debao train station 1



Guangxi Debao train station 2



Liaoning



Jiangxi Ruichang 1



Jiangxi Ruichang 2



Ningbo Zhenhai Port area 1



Ningbo Zhenhai Port area 2



Guangxi Pinguo train station 1

Liftforce SA (Pty) Ltd.

Unit 1. Dunswart Park, 5 Main Reef Road.
Dunswart. Boksburg 1508.

Email: contact@liftforce.net

Tel: +27 (0) 10 599 2412

Cell: +27(0) 78 116 1703

www.liftforce.net



SPECIFICATION

	Model					CRS4532-MWU3 (CUMMINS QSM11) / CRS4532-MWY3 (VOLVO TAD1151VE)	
Lifting	1	Stacked Levels	Row 1-2-3	Type of Container	Unit	Lifting Capacity	
	2	4x	First row	9'6"	ton-m	45-2.0	
	3	5x			ton-m	43-2.0	
	4	6x			ton-m	-	
	5	3x	Second row	9'6"	ton-m	32-3.85	
	6	4x			ton-m	32-3.85	
	7	2x	Third row	9'6"	ton-m	15-6.35	
	8	3x			ton-m	15-6.35	
	9	Max. Lifting Height				m	15.2
performance	10	Speed	Lifting Speed(Unladen/Laden)		mm/sec	420/250	
	11		Lowering Speed(Unladen/Laden)		mm/sec	360/360	
	12		Forward travel speed(Unladen/Laden)		km/h	25/21	
	13		Backward travel speed(Unladen/Laden)		km/h	25/21	
	14	Traction(Laden)				kN	300-2km/h
15	Outside turning radius				mm	8000	
Weight	16	Self weight(Unladen)				ton	72
	17	Weight Distribution	Laden	Front axle	ton	103	
	18			Rear axle	ton	14	
	19		Unladen	Front axle	ton	37	
	20			Rear axle	ton	35	
Stability	21	Front stability	Forward stability. 40T		First row	1.875	
	22		Forward stability. 25T		Second row	1.806	
	23	Tyre	Front wheel		in	18.00x25/PR40	
	24		Rear wheel		in	18.00x25/PR40	
	25		Wheelbase		mm	6000	
	26		Length		mm	1675	
	27		Front wheel track		mm	3030	
	28		Rear wheel track		mm	2760	
	29	Hydraulic system	Load sense system			New second generation system	
	30		Variable displacement piston pump (new)			New second generation system	
	31		Cooling/filter system			With/with	
	32		High flow main valve (new)			M402	
	33	Cylinder volume	Hydraulic oil		L	700	
	34		Diesel		L	600	
	35	Electric system	Type/voltage		V	CanBus/24V	
	36		Overload system		stand	Electronic control	
	37		Color/graphics display			6.5" color display	
	38		Electronic/ proportion(tonnage/percentage)			With/with	
	39		System integrity			comprehensive	
	40	Cab	Type (new)			Best in China	
	41		Cooling/heating (new)			Electronic control	
	42		Size			big	
	43		Step/handrail			With/two sides	
	44		Front step/handrail			With/fender	
	45		Cab forward shift			Yes	
	46		Travel with door open			Yes	
47	Boom angle	Min./Max.		deg	0/60		
48		Basic design			4 sides box type		
49	Chassis	Basic design			4 sides box type		
50	View	Front, Top, Side, Back				Good	
51	Noise level	Cab interior (Leq)				dBA 70	

REACH STACKER
CONTAINER STACKING 5 LAYERS

